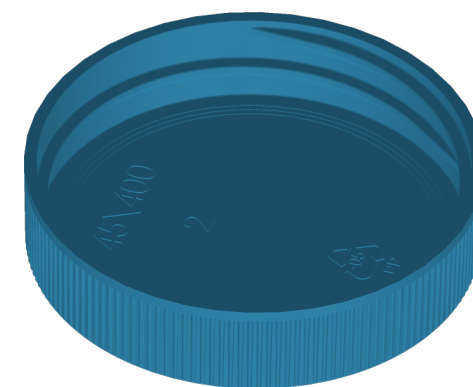
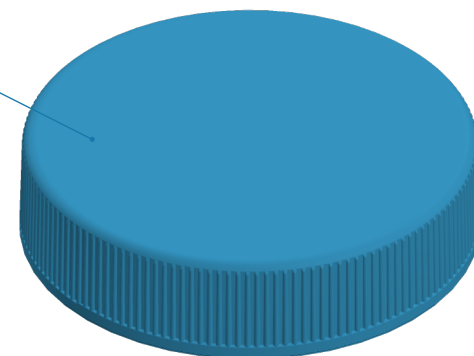




Ra 2.0



Cap 45SP400 Ribbed Matt - For Shive

Project Name: <b>Screwcaps</b>	Part name: <b>Cap 45SP400 Ribbed Matt</b>	Date: <b>28-10-2025</b>	 Projection	 <b>Kuijpers Caps and Closures B.V.</b> Romeinenweg 49, NL-5349 AL Oss Tel. + 31 (0) 412 62 62 64 E-mail: <a href="mailto:info@kuijperscapsandclosures.nl">info@kuijperscapsandclosures.nl</a> Website: <a href="http://www.kuijperscapsandclosures.nl">www.kuijperscapsandclosures.nl</a>
Weight: <b>3,69 g ± 4%</b>	Material: <b>Polypropyleen Homopolymeer (Polypropyleen PP CAS nr. 9003-07-0)</b>	Papersize: <b>A4 landscape</b>	All intellectual and proprietary rights of technical and/or conceptual information contained in this drawing are exclusively owned by Kuijpers Caps and Closures B.V., Oss, The Netherlands. Reproduction in part or whole without written permission of Kuijpers Caps and Closures is prohibited.	
Drawn by: <b>I S Fiolet</b>	Status: <b>for information only</b>	Units: <b>mm</b>		
		Scale: <b>1.72:1</b>		